



ETM METAL GROUP

COMPANY PROFILE



ETM METAL GROUP, PT



GRAND SLIPI TOWER
Jl. Letjen. S Parman - Kav. 22-24 Slipi
Jakarta Barat.



Phone : +62 21-2920-5854
Mobile : +65 9057-3510



Palevi : palevi.etmgroup@gmail.com
Sales : sales@etmmetalgroup.co.id

WELCOME TO **COMPANY PROFILE**

PT. ETM Metal Group is a national private company and is engaged in mining tin, with the vision of the tin and aluminium company nationwide private sector that has the ability to meet the demands from the global tin and aluminium market with quality items high and sustained, figure out marketing strategies, budgeting along with procurement of capital, managing the corporate finance and its subsidiaries, formulate values, norms, and thinking of corporate basis, define business development, both purchases and alliances by subsidiaries.

The background of the slide is a photograph of an industrial facility, likely a refinery or chemical plant. A prominent feature is a tall, cylindrical distillation column with multiple levels of scaffolding and piping. The sky is a clear, pale blue. The image is partially obscured by a large, diagonal blue graphic element that sweeps from the bottom left towards the top right, creating a modern, corporate feel.

Mision & Vision

Company Vision

To be recognized and respected as proficient miner and supplier of tin and aluminium locally and internationally.

Company Mission

To reward our shareholders customer, employees, supplier government and the communities and which we operate for through the provision of organic organizational growth quality superior performance in all we do with a strong focus on environmental friendliness.



ONSHORE AND ● OFFSHORE TIN MINING



The operations area of PT. ETM Metal Group covering Tanjung Balai and section of Riau Islands, both onshore in mining concession (KP) which mostly in Tanjung Balai. Alluvial mining process recognized by adequate equipment like gravel pump and humprey spiral which operation is compliance with good mining practices.

With term of offshore using operation capacity of 15-50 meters below sea level and digging capability up to more than 3.5 million cubic meters of material every month. In order to raise offshore production. PT. ETM Metal Group has generated cutter suction dredges with digging capability up to 25 meters below sea level to reach the dredges reserve. In addition, the company also grows bucket wheel dredges as an alternative of bucket line dredges using digging capability about 70 cubic meters below marine level.



● EXPLORATION

PT. ETM Metal Group is carrying out integrated aluminium smelting operations that are profitable, safe and environmentally friendly

Participate in empowering surrounding communities through appropriate Corporate Social Responsibility (CSR), and Community



PT. ETM Metal Group does actively continue to execute exploration activities onshore as well as offshore. The process involves several activities, such because:



- Identification Of Potential Regions
- General Investigations
- Prospecting Drilling
- Calculation Of Resources



The out come of these activities is referred to as measured resources. The exploration drilling and incapacitated using a tanjung balai drill manually which has the capability of drilling to up to 30 meters depth, and also technical drill that may drill to 60 measures depth. Offshore exploration using a drilling boat or any drilling pontoons. Such tools will be able to drill from sea level up to the bedrock and materials samples taken every only two (2) meters or any type of different soil layers.



PROCESSING and ● SMELTING

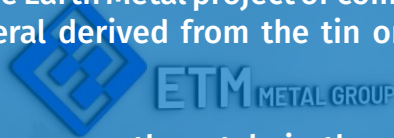
The ores, derived from offshore and onshore mining with tin level of 20-30%, are processed and smelted in the washing plant, in line with major dependence on smelting process, tin ores as well as associated mineral are separated and the level must be increased as much as 72-74%.

This process is essential to discover the best quality of tin metal with high Sn degree and low impurities. Up coming process, tin ores has to undergo a smelting process into tin metal. To obtain the best quality of reduced lead tin metal, refining process is necessary by using purifying device called crystallizer furnished with electrolytic refining.

Here, the corporation operates 12 furnaces, which 1 furnaches in Kundur, Riau Island destinations and 11 furnaces in Mentok, Bangka. Final product are usually in from of bar tin metal with average bodyweight of 16 kg to be able to 30 kg per bar. In addition, tin metal's decoration are variable (customized) in line with customer's requirements which hallmark are listed in London Metal Exchange (LME).

● BUSINESS PROSPECT

The company continues to pursue the development of tin and other mineral businesses, one of which is the Rare Earth Metal project or commonly called Rare Earth. Rare Earth Metal is an associated mineral derived from the tin ore mining process, and has tremendous benefits.



The large demand for rare earth metals in the market has made the company focus on producing them. The project, which is located in Tanjung Ular Bangka, is expected to begin production and be able to contribute significantly to the company's revenue.

Rare Earth Metal Products the company produces are in the form of Hydroxide with a production capacity of 50 kg per day, and the price reaches US \$ 230 per kg. Uses of Rare Earth Metal include raw materials for various electronic products such as tv screens, laptops, cell phones, and others.



TIN PRODUCTS



TIN Ingot



TIN Ingot



The products produced have the quality that has been accepted by the international market and are listed on the London metal exchange market (London Metal Exchange).

The quality of each product produced by the company is guaranteed with an international standard product certificate (weight and analysis certificate) and is guided by product standards set by LME so that it can be traded as a commodity on the metal exchange market.

The types of products manufactured by PT. ETM Metal Group are distinguished by their quality and shape. Based on product quality can be distinguished from Banko Tin (99.9% Sn), Banko Low Lead (Banko LL) consists of Banko LL 100 ppm, Banko LL 200 ppm and Banko Four Nine (99.99% Sn).

TIN INGOT

Product Description

Product Name : Tin Ingot
Executive Standart : GB/T728 - 1998

Appearance : Silver Metal
Properties : Soft with good ductility
Melting Point : 232 degree
Density : 7.29g/cm3

ETM Products		High Grade	Pb < 100	Pb < 300	Pb < 500
		ETM-HG	ETM-1	ETM-2	ETM-3
Impurities	Al (%)	0,0008	0,0010	0,0010	0,0010
(Max.)	As (%)	0,0015	0,0060	0,0100	0,0300
	Bi (%)	0,0025	0,0070	0,0150	0,0300
	Cd (%)	0,0005	0,0008	0,0010	0,0010
	Ni + Co (%)	0,0010	0,0010	0,0050	0,0050
	Cu (%)	0,0010	0,0070	0,0150	0,0500
	Fe (%)	0,0015	0,0050	0,0070	0,0100
	Pb (%)	0,003	0,0100	0,0300	0,0500
	Sb (%)	0,0035	0,0150	0,0300	0,0500
	Zn (%)	0,0008	0,0010	0,0010	0,0010
Tin (Min.)	Sn (%)	99,9900	99,9500	99,9000	99,8500

Application

This product can be used as coating materials in food, machinery, electrical appliances, automotive, aerospace and other industrial sectors have a very wide range of uses. In the float glass production, the molten glass floats on the surface of the cooling pool of molten tin cure. Package : 251 kg per ingot, then 1050 kg per bundle, or as customers requirement.

TIN Ingot



COPPER PRODUCTS



COPPER Ingot



Copper remains one of the most beautiful and unique metals. There are such a variety of usages. We have a true passion for copper products crafted out of the highest quality copper. We attract professional coppersmiths who share our goals, standards and ideals when it comes to copper products.

High Quality, Copper products are unsurpassed. We insist on using only high quality copper for long lasting durability and that much sought after Natural Patina. Primary factors that go into determining the quality of copper are Gauge, Purity and Construction Technique.

Copper Thickness is referred to as a Gauge number, with Lower Numbers having a greater thickness. Copper Naturally Pure and is used at 99% pure copper with an added 1 % zinc for strength. Construction Technique is an important key to our longlasting, artistic - high quality copper products.

COPPER INGOT

Product Description

Copper Ingots were the fuel that fired the wars between the Kingdoms when Gaia had fallen, and long before. It's common, yet durable demeanor, made it easy to raise armies and equip them with reliable armors. Is the main ingredient when crafting the Copper Armor, and various metal-tiered equipment, tools, and structures.

Name : Copper Ingots
Packing : Wood Pallet, about 20 pallet per 20' container
Delivery Time : in 15 days

%	Cu	Pb	Fe	Ni	Sn	Zn	Al	S	Sb	Mn	As
Min	84.0	4.0			4.0	4.0					
Max	86.0	5.5	0.03	1.0	6.0	6.0	0.005	0.08	0.25	0.01	0.03



ALUMINIUM PRODUCTS



ALUMINIUM Ingot



ALUMINIUM Ingot



Strong, lightweight and infinitely recyclable, aluminium is a vital material that keeps the modern world moving. Virtually every person and indeed most of the world, uses aluminium every single day. The metal is so ubiquitous that many of us don't even realize how often it touches our lives. In fact, people use more aluminium today than at any point in the 125-year history of the metal's commercial production. Aluminium is critical to modern mobility and connectivity and without it, many of the conveniences of today's world would simply not exist.

The reach of this metal has grown exponentially. As aluminium enters into its second century of widespread use, new scientific and production technologies continue to expand its market potential. Solar panel nanotechnology, transparent aluminium alloys and aluminium-air batteries will help lead the way toward the development of new and innovative markets in the 21st century.

Today, aluminium is recognized as one of the most energy efficient and sustainable construction materials. An estimated 85 percent of the aluminium used in buildings built today comes from recycled material. Aluminium-intensive LEED-certified buildings have won awards for Platinum, Gold and Best-in-State sustainability across

ALUMINIUM INGOT

Appearance : silvery white Aluminium ingot for remelting is produced by molten salt electrolysis method using alumina and cryolite. Products meet the national standard GB/T1196-2002. The surface of ingot is clean and smooth.

Product Description

Pure Aluminium Ingot

Chemical Composition : Al
Weight : 25 Kg
Al (Min.) : 99% - 99.9%

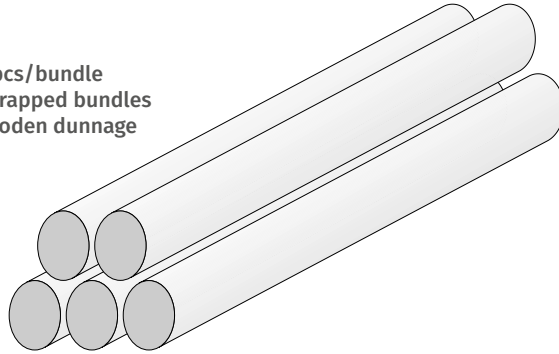
Al	Zn	Mg	Cu	Si	Fe
99.6% min.	0.030%	0.03%	0.010%	0.16%	0.17%
99.7% min.	0.03%	0.02%	0.01%	0.2%	0.04%
99.9% min.	0.025%	0.01%	0.005%	0.05%	0.01%
99.85% min.	0.030%	0.02%	0.005%	0.05%	0.015%

ALUMINIUM Ingot



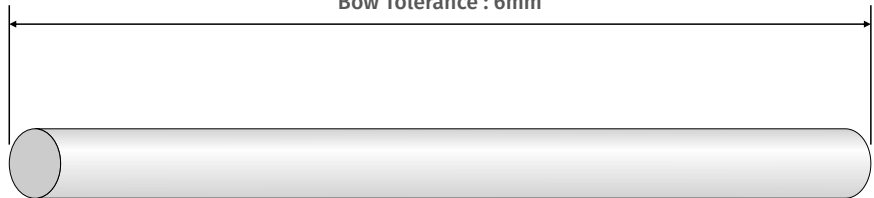
ALUMINIUM BILLET

5 pcs/bundle
Steel strapped bundles
on wooden dunnage



Diameter :
127mm \pm 1mm (5")
178mm \pm 2mm (7")
203mm \pm 2mm (8")

Length of Long : 6,350mm
Bow Tolerance : 6mm



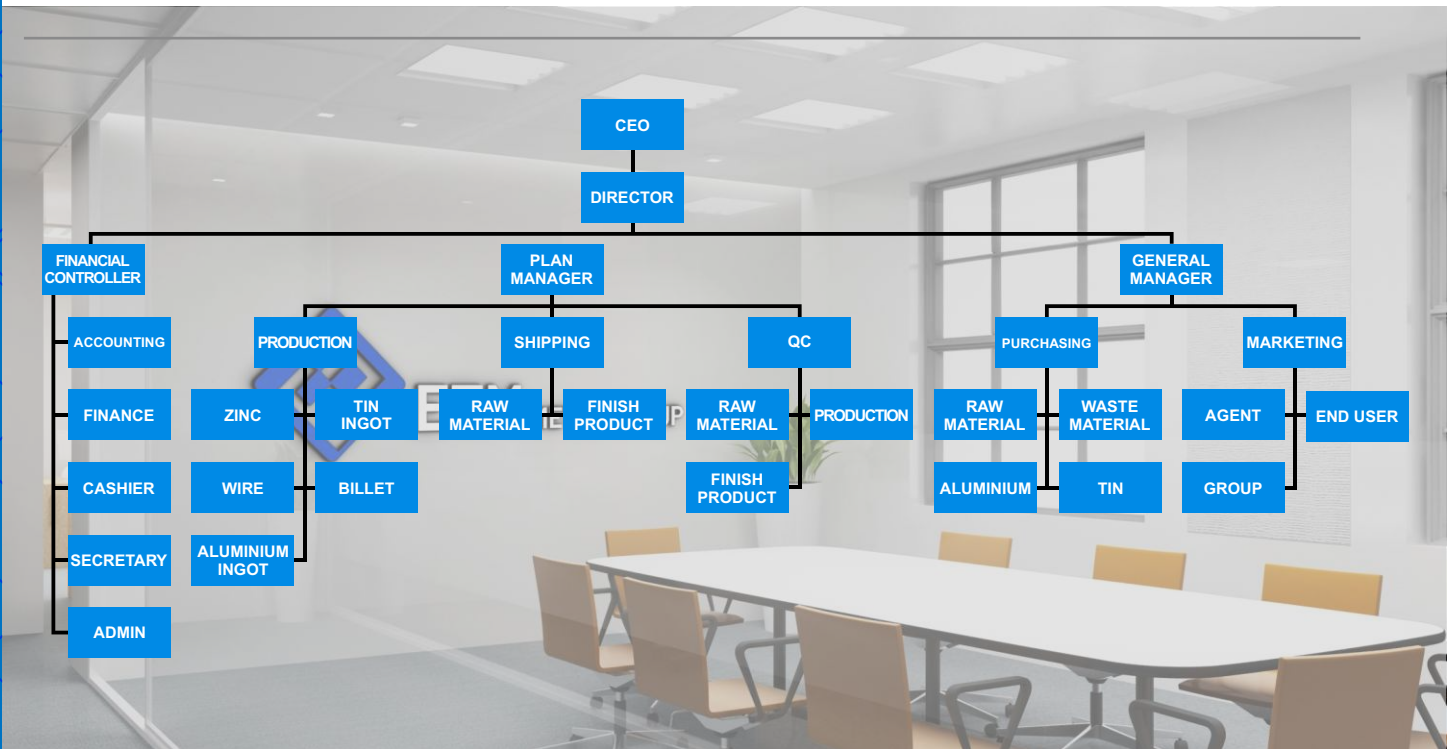
Alloy Type	Si (%)	Fe (%)	Cu (%)	Mn (%)	Mg (%)	Cr (%)	Zn (%)	Ti (%)	Other Each	Other Total
6053	0.2 ~ 0.6	0 ~ 0.35	0 ~ 0.8	0 ~ 0.1	0.45 ~ 0.9	0 ~ 0.1	0 ~ 0.1	0 ~ 0.1	0.05	0.15
6061	0.4 ~ 0.8	0 ~ 0.7	0.15 ~ 0.4	0 ~ 0.15	0.8 ~ 0.12	0.04 ~ 0.35	0 ~ 0.25	0 ~ 0.15	0.05	0.15
6005	0.6 ~ 0.9	0 ~ 0.35	0 ~ 0.1	0 ~ 0.1	0.4 ~ 0.6	0 ~ 0.1	0 ~ 0.1	0 ~ 0.1	0.05	0.15



ALUMINIUM Billet



| Organizational Structure





PT. ETM METAL GROUP

Contact Us

Address : Grand Slipi Tower
Jl. S Parman Kav 22-24
Jakarta Barat

Phonne : +62 21-2949-0536

Mobile : +65 9057-3510

Email : sales@etmmetalgroup.co.id
: palevi.etmgroup@gmail.com

Website : www.etmmetalgroup.co.id